

PHILIPS

sense and simplicity

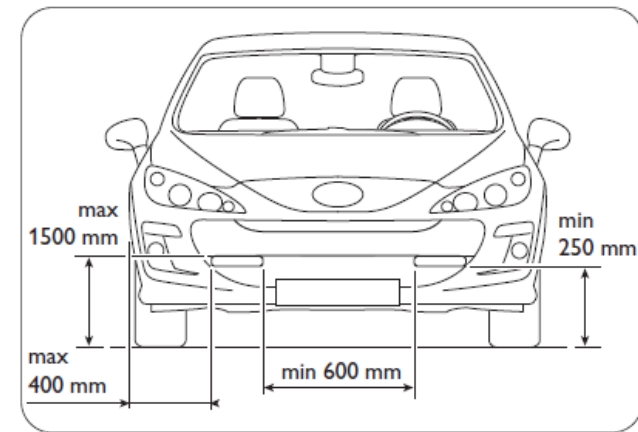
LED Daytime Light
Assembly by a professional



1. Check mountability on car

3 min.

Check that Philips LED Daytime light can be installed on the car can be mounted respecting the beside sketch (legal installation position ECE R48)



2. Prepare the car front face: Cut the plastic grid/cover **if necessary (10-20 min.)**



Tips: to help later to pull the lamp cable trough the motor compartment fix a light wire (1,5 m) on the connectors

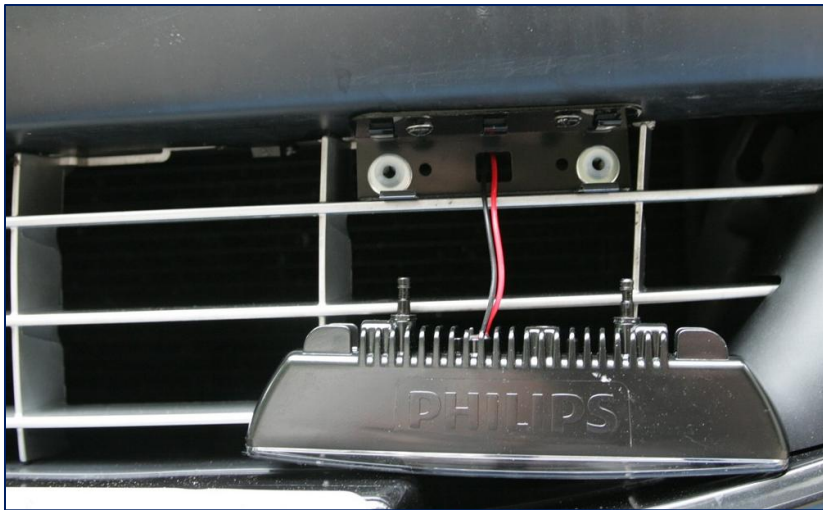
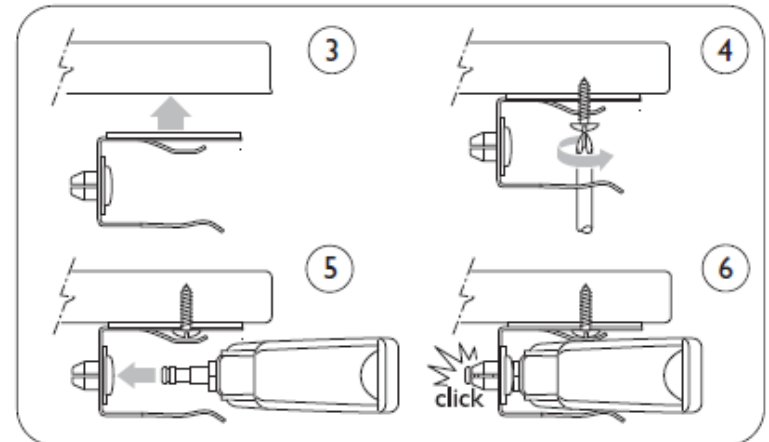
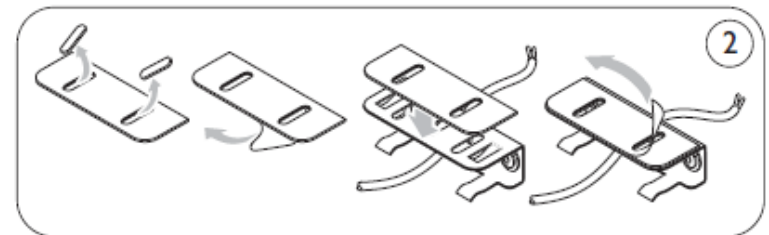
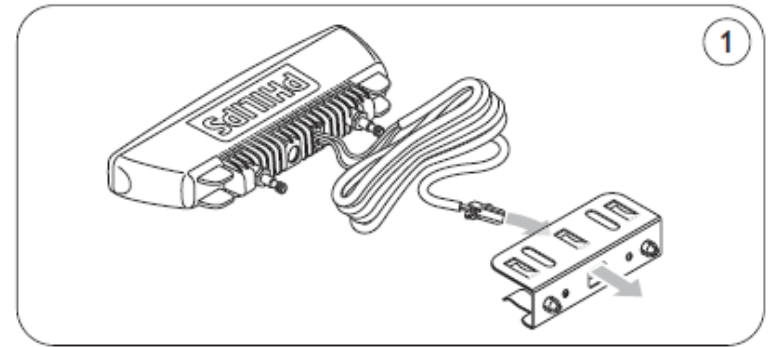


3- Install of the lamps on the car

10 min.

For both lamps:

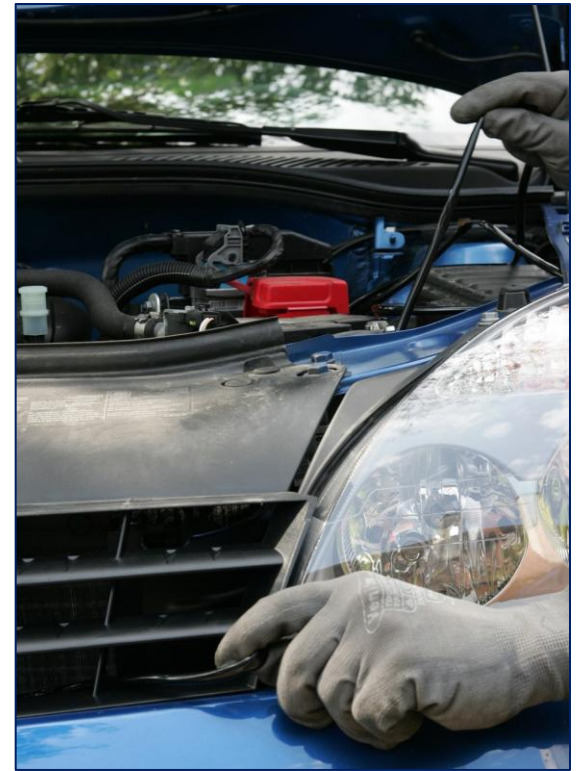
1. Pass the cable through the bracket hole
2. Stick the positioning double sided tape on the bracket
3. Position the bracket on its final position
4. Fix it using the autodrilling screws
5. Clip the DRL module into the bracket



4- Pull the the cable until the battery area

Make sure to fix it securely using the cable ties
(not to moving not hot parts)

10- 15 min.



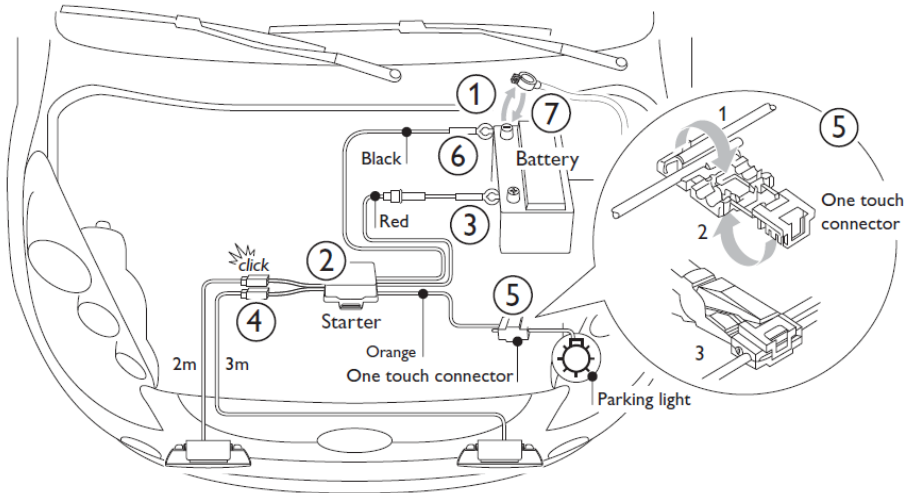
5- Fix the electronic starter box near the battery area

2 min.



6- Electrical connection **10 min.**

Follow the steps in the below sketch & picture.



Tips:

To identify the position light cable on step 5, the position light wire can be detected by turning ON this function and using a multi-meter on connector (or a 12V lamp).

